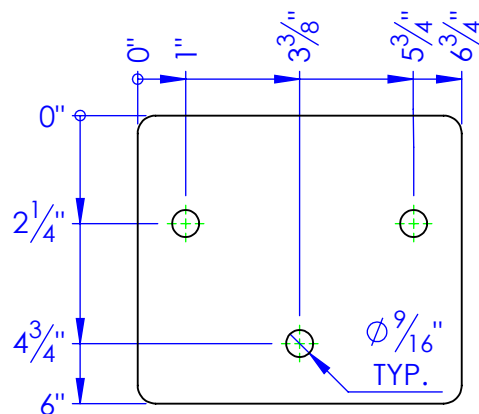
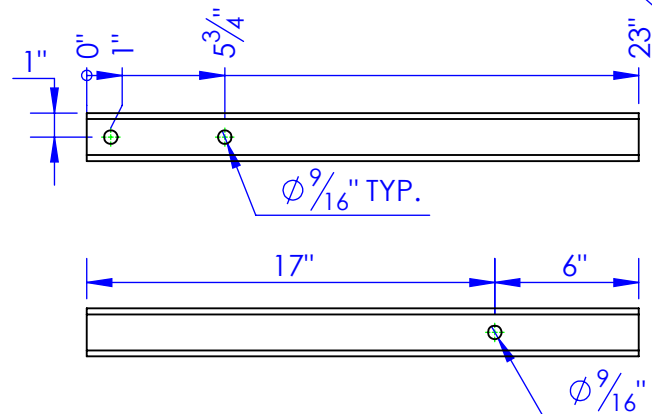
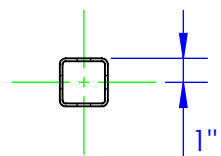
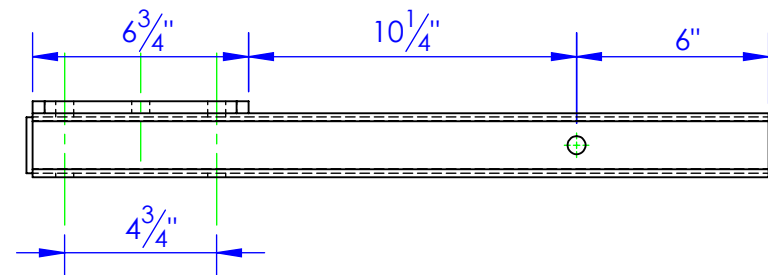
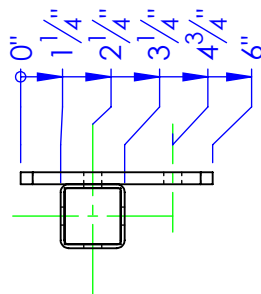
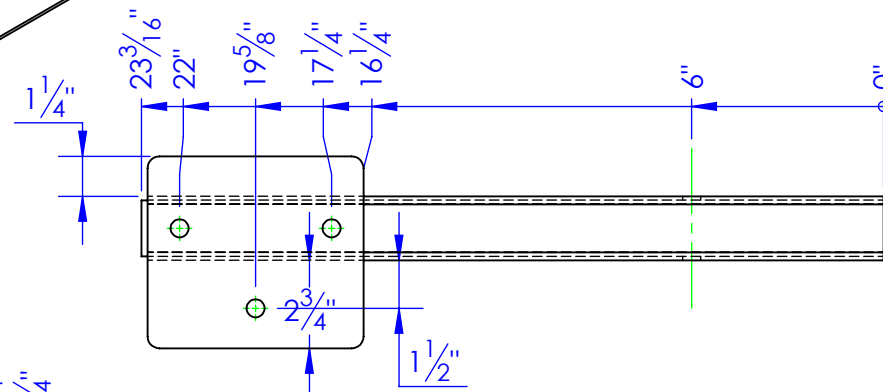
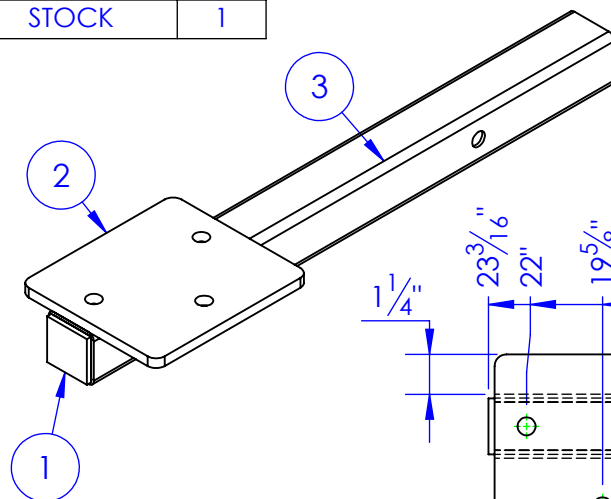


ITEM NO.	PART NUMBER	DESCRIPTION	DRAWING #	QTY.
1	FI .1875 x 1.75 L 1.75	LENGTH: 1.3/4"	STOCK	1
2	FI-.375 x 6 L 6.75	LENGTH: 6-3/4"	STOCK	1
3	ST 2x11ga. L 23	LENGTH: 23"	STOCK	1

REVISIONS			
REV.	DESCRIPTION	DATE	APPROVED
A	INITIAL RELEASE	10/24/2012	



2
FI-.375 x 6 L 6.75
LENGTH: 6-3/4"
4.22 LBS



3
ST 2x11ga. L 23
LENGTH: 23"
5.57 LBS

PROPRIETARY AND CONFIDENTIAL
THE INFORMATION CONTAINED IN THIS DRAWING IS THE SOLE PROPERTY OF TRIPLE C INC. ANY REPRODUCTION IN PART OR AS A WHOLE WITHOUT THE WRITTEN PERMISSION OF TRIPLE C INC. IS PROHIBITED.

DIMENSIONS ARE IN INCHES TOLERANCES: FRACTIONAL $\pm 1/16$ ANGULAR: MACH ± 1 BEND \pm TWO PLACE DECIMAL ± 0.010 THREE PLACE DECIMAL ± 0.005	
MATERIAL	---
DO NOT SCALE DRAWING	

NAME	DATE
DRAWN	HEATH 10/24/2012
PART #	OP-PIPE H-VISE STAND
ASM #	
COMMENTS:	
TRUCK SIDE PIPE HOLDER VISE STAND	

P.O. BOX 248, SABETHA, KS 66534	
TRIPLE C INC.	
SIZE A	DWG. NO. 90-1323
SCALE: 1:6	WEIGHT: 9.95
SHEET 1 OF 1	